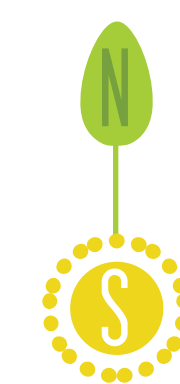


FEATURES

- 1 Circular Fountain
- 2 Olive Allee
- 3 Pine Forest
- 4 Wish Trees
- 5 Formal Terrace
- 6 Water Drop Pot
- 7 Pomegranate Amphitheater
- 8 Meadow
- 9 Wildflowering L.A. & Demonstration Gardens
- 10 Vernal Pool
- 11 Citrus Grove
- 12 Labyrinth
- 13 Compost
- 14 Toolshed

PLANT COMMUNITIES

- OAK GROVE
- MEDITERRANEAN
- DESERT
- SEASONAL WASH
- MEADOW
- COASTAL SAGE SCRUB
- CITRUS GROVE



Arlington Garden is a three-acre garden leased to the City of Pasadena and entrusted by the city to the Arlington Garden non-profit. The mission of this free public garden is to engage, educate and demonstrate how a climate appropriate garden can be beautiful while incorporating the goals of water conservation and community building around environmental sustainability.

